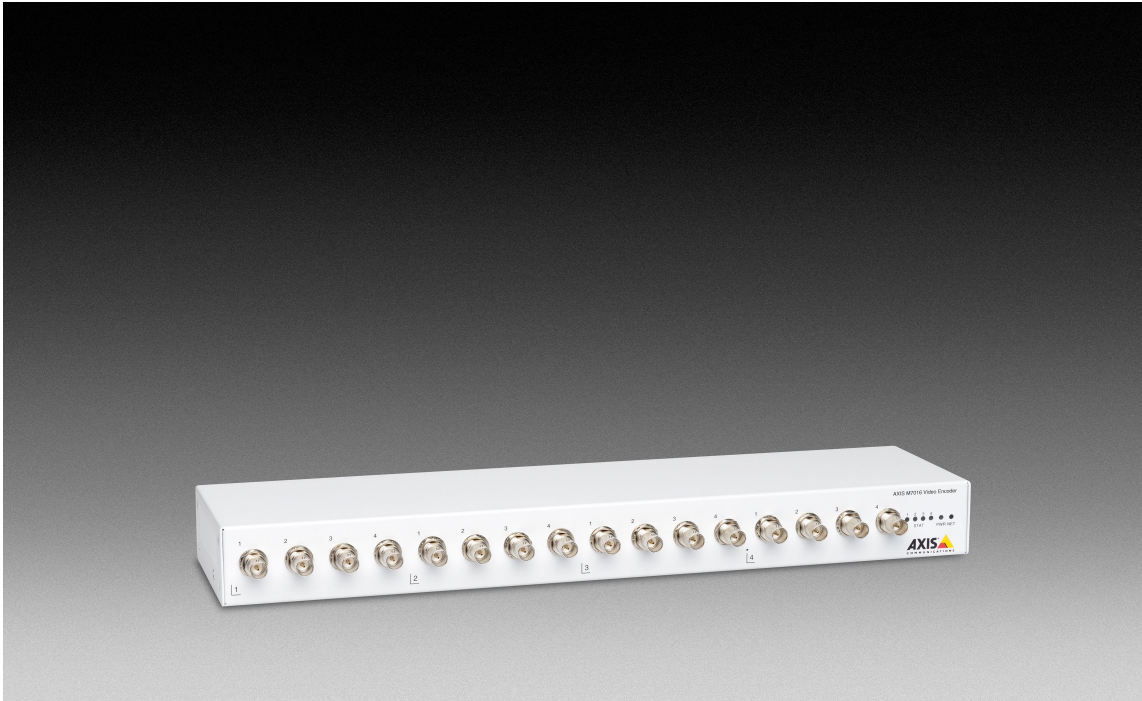


AXIS M7016 Video Encoder

Cost-effective 16-channel video encoder.



- > Full frame rate
- > Simultaneous H.264 and Motion JPEG streams
- > Edge storage
- > High resolution quad-view

AXIS M7016 Video Encoder offer high quality video, efficient and affordable integration of analog cameras into a powerful IP-based video surveillance system and is ideal for small to medium-sized installations, within retail for example.

AXIS M7016 is a cost-effective and simple way to migrate analog CCTV cameras into a network video system.

AXIS M7016 can be used as a standalone unit or be mounted in a 19" rack. The 16-channel encoder offers one H.264 and one Motion JPEG stream per channel at full frame rate in all resolutions up to D1 (720x480 NTSC or 720x576 PAL). A single Ethernet port serves all 16 channels.

AXIS M7016 offers intelligent video capabilities such as video motion detection and active tampering alarm. The

encoder offers a convenient video management solution with its built-in four memory card slots for edge storage and support for software such as the complimentary AXIS Camera Companion. AXIS M7016 comes with a power supply.

All Axis video encoder products provide pan, tilt and zoom support, enabling control of analog PTZ cameras.



Technical Specifications – AXIS M7016 Video Encoder

Video	
Video compression	H.264 (MPEG-4 Part 10/AVC) Baseline and Main Profile Motion JPEG
Resolutions	176x120 to 720x576, 176x120 to 1536x1152 for quad view
Frame rate	H.264: 30/25 (NTSC/PAL) fps 15 fps in quad view in full resolution Motion JPEG: 30/25 (NTSC/PAL) fps 15 fps in quad view in full resolution
Video streaming	One individually configured H.264 and one Motion JPEG stream per channel at full frame rate More streams if identical or limited in frame rate/resolution Controllable frame rate and bandwidth, VBR/CBR H.264
Image settings	Compression, Color, Brightness, Contrast, Aspect ratio correction, Mirroring of images, Text and image overlay, Privacy mask, Enhanced deinterlace filter, Video termination, Anti-aliasing, Temporal noise filtering Rotation: 90°, 180°, 270°
Pan/Tilt/Zoom	Wide range of analog PTZ cameras supported (drivers available for download at www.axis.com) Support for one PTZ driver in each group of 4 channels 100 presets/camera, Guard tour, PTZ control queue Supports Windows compatible joysticks
Network	
Security	Password protection, IP address filtering, HTTPS ^a encryption, IEEE 802.1X ^a network access control, Digest authentication, User access log
Supported protocols	IPv4/v6, HTTP, HTTPS ^a , IEEE 802.1X ^a , QoS Layer 3 DiffServ, FTP, SMTP, Bonjour, UPnP [™] , SNMPv1/v2c/v3 (MIB-II), DNS, DynDNS, NTP, RTSP, RTP, TCP, UDP, IGMP, RTCP, ICMP, DHCP, ARP, SOCKS
System integration	
Application Programming Interface	Open API for software integration, including VAPIX [®] ; specifications at www.axis.com AXIS Video Hosting System (AVHS) with One-Click Camera Connection ONVIF Profile S; specification at www.onvif.org
Intelligent video	Video motion detection, Active tampering alarm
Event triggers	Intelligent video, Video loss

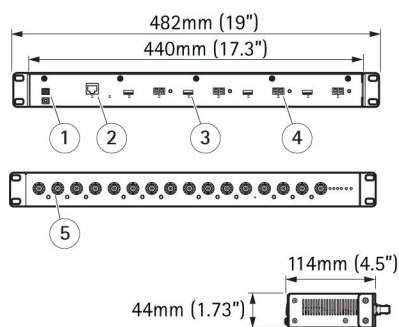
Event actions	File upload: FTP, HTTP, network share and email Notification: email, HTTP and TCP Video recording to edge storage Pre- and post-alarm video buffering PTZ preset
Data streaming	Event data
Built-in installation aids	Pixel counter
General	
Casing	Metal casing, Standalone, rackmount or wallmount
Memory	4x 512 MB RAM, 4x 128 MB Flash
Power	AXIS PS-P power supply 12 V DC, 17 W
Connectors	16 x Analog composite video inputs (BNC) 1 x 1000 Base TX Ethernet on RJ45 4 x Terminal blocks for RS422/RS485 serial communication (full duplex) 1 x DC input terminal block
Edge storage	Four microSD/microSDHC/microSDXC slots supporting memory cards up to 64 GB (cards not included) Support for recording to network share (network-attached storage or file server)
Operating conditions	0 °C to 50 °C (32 °F to 122 °F) Humidity 20–80% RH (non-condensing)
Approvals	EN 55022 Class B, EN 61000-3-2, EN 61000-3-3, EN 55024, EN 61000-6-1, EN 61000-6-2, FCC Part 15 Subpart B Class B, ICES-003 Class B, VCCI Class B, C-tick AS/NZS CISPR 22 Class B, KCC KN22 Class B, KN24, IEC/EN/UL 60950-1
Weight	1850 g (4.1 lb)
Included accessories	Power supply, Mounting and connector kits (incl. 2 mount brackets and 4 rubber feet), Installation Guide, Installation and Management Software CD, Windows decoder user licenses
Video management software	AXIS Camera Station and video management software from Axis' Application Development Partners (not included). For more information, see www.axis.com/products/video/software
Warranty	Axis 1-year warranty and AXIS Extended Warranty option, see www.axis.com/warranty

- a. This product includes software developed by the OpenSSL Project for use in the OpenSSL Toolkit (<http://www.openssl.org/>), and cryptographic software written by Eric Young (ey@cryptsoft.com).

More information is available at www.axis.com

Dimensions

- Power
- Network connector
- Memory card slots
- RS422/RS485 serial ports
- Video inputs



Optional accessories

- AXIS T8310 Video Surveillance Control Board
- AXIS P7701 Network Video Decoder
- AXIS T8414 Installation Display

